

Slow Speed Shaft Direction	
Horizontal, slow speed shaft level	H
Vertical, slow speed shaft down	V
Vertical, slow speed shaft up	W
Universal mounting	N

Mounting style	
Foot	H
V flange	V
Flange	F

Type of Input	
Gearmotor	M
With adaptor	JM

Special Specifications	
Standard specification	blank
Special specification	S

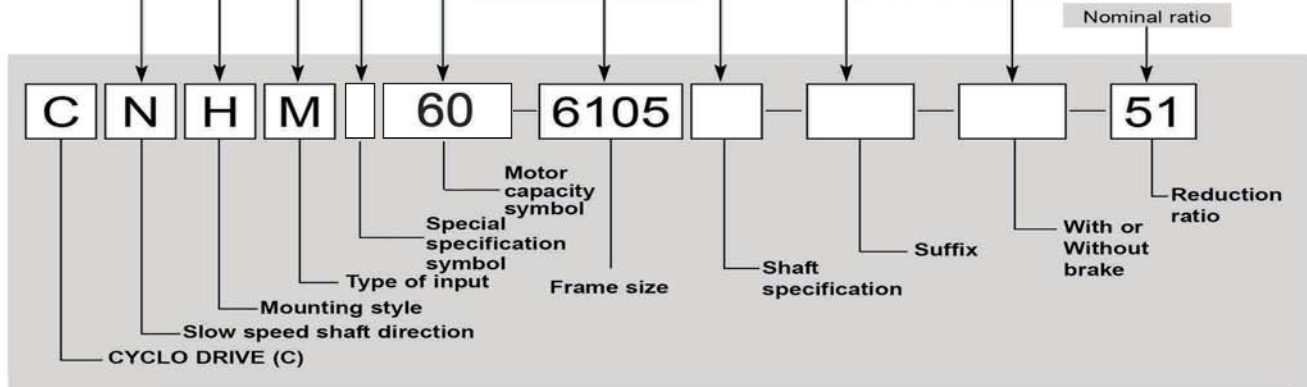
		Motor Capacity Symbol						
4P	Capacity symbol	01	02	03	05	08	1	
	kW (HP)	0.1 (1/8)	0.2 (1/4)	0.25 (1/3)	0.4 (1/2)	0.55 (3/4)	0.75 (1)	
	Capacity symbol	1H	2	3	4	5	8	
	kW (HP)	1.1 (1.5)	1.5 (2)	2.2 (3)	3.0 (4)	3.7 (5)	5.5 (7.5)	
	Capacity symbol	10	15	20	25	30	40	
	kW (HP)	7.5 (10)	11 (15)	15 (20)	18.5 (25)	22 (30)	30 (40)	
6P	Capacity symbol	50	60	75	100			
	kW (HP)	37 (50)	45 (60)	55 (75)	75 (100)			
	Capacity symbol	016	026	036	056	086	16	
	kW (HP)	0.1 (1/8)	0.2 (1/4)	0.25 (1/3)	0.4 (1/2)	0.55 (3/4)	0.75 (1)	
	Capacity symbol	1H6	26	36	46	56	86	
	kW (HP)	1.1 (1.5)	1.5 (2)	2.2 (3)	3.0 (4)	3.7 (5)	5.5 (7.5)	
6P	Capacity symbol	106	156	206	256	306	406	
	kW (HP)	7.5 (10)	11 (15)	15 (20)	18.5 (25)	22 (30)	30 (40)	
	Capacity symbol	506	606	756	1006	1256	1506	
	kW (HP)	37 (50)	45 (60)	55 (75)	75 (100)	90 (125)	110 (150)	
	Capacity symbol	1756						
	kW (HP)	132 (175)						

Shaft specification	
Metric JIS (Standard)	-
Inch size	Y
Metric DIN	G

Suffix		
Standard	-	Low Backlash
Light Heavy Radial	R1	With AF (inverter) motor
High Cap. Brg. Ductile Casing	R2	Servo Motor
Baseplate	BP	DC Motor
HH Type Ceiling	H1	High Efficiency Motor
Modification Left Wall	H2	Torque Limiter
Modification Right Wall	H3	

With or Without Brake	
Without brake	-
With brake	B

Frame size
(Refer to Selection
Tables starting from
page B-13.)

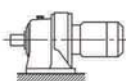


Product and Nomenclature Symbol Examples (Gearmotor)

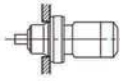
Standard and various application products of CYCLO GEARMOTOR are classified by their nomenclature symbol as below. Refer to specific catalogs or consult us for details on our application products.

CYCLO® GEARMOTORS

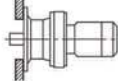
CHHM
(CNHM)



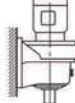
CHFM
(CNFM)



CHVM
(CNVM)



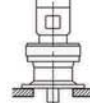
CVHM
(CNHM)



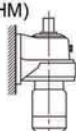
CVFM
(CNFM)



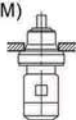
CVVM
(CNVM)



CWHM
(CNHM)



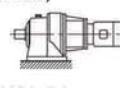
CWFM
(CNFM)



CWVM
(CNVM)

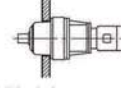


CHHJM
(CNHJM)



With Adaptor

CHFJM
(CNFJM)



With Adaptor

CVVJM
(CNVJM)



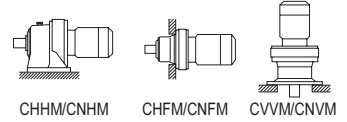
With Adaptor

Selection Tables Gearmotors #CNHM60, #CHHM60, #CNVM60, #CVVM60

37 kW

n₁: Motor Speed

Hz		50Hz		60Hz	
P		4	6	4	6
n ₁	r/min	1450	980	1750	1165

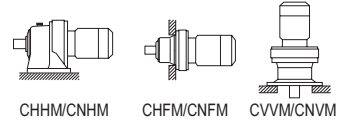


50Hz						60Hz						Nomenclature			Page of Dimension Sheet		
Output Speed n ₂	Output Torque Tout		Allowable Radial Load Pro		SF	Output Speed n ₂	Output Torque Tout		Allowable Radial Load Pro		SF	Input Capacity Symbol	Frame Size	Reduction Ratio	CNHM	CNFM	CNVM
r/min	N·m	kgf·m	N	kgf		r/min	N·m	kgf·m	N	kgf					CHHM	CHFM	CVVM
12.0	18700	1910	141000	14300	*1	14.5	18700	1910	133000	13500	*1	50 -	6235DB	- 121	B-114	B-131	B-150
	20500	2090	156000	15900	*1		20500	2090	148000	15000	*1	50 -	6245DB	- 121	B-114	B-131	B-150
	26500	2710	191000	19500	1.04		22000	2240	181000	18500	1.25	50 -	6255DB	- 121	B-115	B-132	B-151
11.3	29800	3040	192000	19600	1.04	13.4	25100	2560	183000	18700	1.16	506 -	6255	- 87	B-107	B-123	B-142
			235000	23900	1.18				224000	22900	1.44	506 -	6265	- 87	B-107	B-123	B-142
8.79	26200	2680	168000	17100	*1	10.6	26200	2680	158000	16100	*1	50 -	6245DB	- 165	B-114	B-131	B-150
			205000	20900	0.86				194000	19800	1.04	50 -	6255DB	- 165	B-115	B-132	B-151
7.44	31200	3180	216000	22100	*1	8.97	31200	3180	204000	20800	*1	50 -	6255DB	- 195	B-115	B-132	B-151
			251000	25600	1.21				238000	24300	1.37	50 -	6265DA	- 165	B-115	B-132	B-151
6.28	50700	5160	276000	28100	0.91	7.58	42000	4280	266000	27100	1.10	50 -	6265DA	- 231	B-115	B-132	B-151
			263000	26800	1.02				250000	25400	1.23	50 -	6265DA	- 195	B-115	B-132	B-151
5.31	46000	4690	276000	28100	*1	6.41	46000	4690	276000	28100	*1	50 -	6265DA	- 273	B-115	B-132	B-151
4.55	70000	7130	248000	25300	0.97	5.49	58000	5910	248000	25300	1.18	50 -	6275DA	- 319	B-115	-	B-151
			248000	25300	*1				68200	6950	248000	25300	*1	50 -	6275DA	- 377	B-115
3.85	82700	8430	248000	25300	0.82	4.64	68500	6980	248000	25300	1.00	50 -	6275DA	- 377	B-115	-	B-151
			248000	25300	0.82				68500	6980	248000	25300	1.00	50 -	6275DA	- 377	B-115

45 kW

n₁: Motor Speed

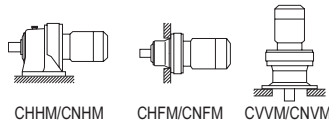
Hz		50Hz		60Hz	
P		4	6	4	6
n ₁	r/min	1450	980	1750	1165



50Hz						60Hz						Nomenclature			Page of Dimension Sheet		
Output Speed n ₂	Output Torque Tout		Alloable Radial Load Pro		SF	Output Speed n ₂	Output Torque Tout		Alloable Radial Load Pro		SF	Input Capacity Symbol	Frame Size	Reduction Ratio	CNHM	CNFM	CNVM
r/min	N·m	kgf·m	N	kgf		r/min	N·m	kgf·m	N	kgf					CHHM	CHFM	CVVM
132	3100	316	26800	2730	1.07	159	2570	262	25300	2570	1.07	60 -	6195	- 11	B-104	B-120	B-139
			51900	5290	1.33				49200	5010	1.33	60 -	6205	- 11	B-105	B-121	B-140
			52600	5360	1.67				49800	5080	1.67	60 -	6215	- 11	B-105	B-121	B-140
112	3660	373	27700	2830	1.07	135	3030	309	26200	2670	1.07	60 -	6195	- 13	B-104	B-120	B-139
			55700	5680	1.33				52800	5380	1.33	60 -	6205	- 15	B-105	B-121	B-140
			56500	5750	1.67				53500	5450	1.67	60 -	6215	- 15	B-105	B-121	B-140
96.7	4220	431	29000	2960	1.07	117	3500	357	27400	2800	1.07	60 -	6195	- 15	B-104	B-120	B-139
			55700	5680	1.33				52800	5380	1.33	60 -	6205	- 15	B-105	B-121	B-140
			56500	5750	1.67				53500	5450	1.67	60 -	6215	- 15	B-105	B-121	B-140
85.3	4790	488	21200	2160	0.85	103	3970	404	20200	2060	0.87	60 -	6185	- 17	B-104	B-120	B-139
			30600	3120	1.07				28900	2950	1.07	60 -	6195	- 17	B-104	B-120	B-139
			22800	2330	0.85				21700	2210	0.87	60 -	6185	- 21	B-104	B-120	B-139
69.0	5910	603	32900	3350	0.91	83.3	4900	499	31100	3170	0.91	60 -	6190	- 21	B-104	B-120	B-139
			32900	3350	1.07				31100	3170	1.07	60 -	6195	- 21	B-104	B-120	B-139
			62200	6340	1.32				59000	6010	1.32	60 -	6205	- 21	B-105	B-121	B-140
			63600	6480	1.67				60300	6140	1.67	60 -	6215	- 21	B-105	B-121	B-140
			67200	6850	2.09				63700	6490	2.09	60 -	6225	- 21	B-106	B-122	B-141
65.3	6250	637	62300	6350	1.33	77.7	5260	536	59300	6050	1.33	606 -	6205	- 15	B-105	B-121	B-140
			63100	6430	1.67				60100	6130	1.67	606 -	6215	- 15	B-105	B-121	B-140
			67400	6870	2.21				64200	6540	2.21	606 -	6225	- 15	B-106	B-122	B-141
58.0	7040	718	34200	3490	0.90	70.0	5830	595	32400	3300	0.90	60 -	6195	- 25	B-104	B-120	B-139
			35700	3640	0.84				33900	3450	0.84	60 -	6195	- 29	B-104	B-120	B-139
50.0	8170	832	67600	6890	1.02	60.3	6770	690	64100	6530	1.02	60 -	6205	- 29	B-105	B-121	B-140
			68900	7030	1.30				65400	6660	1.30	60 -	6215	- 29	B-105	B-121	B-140
			73100	7450	1.67				69300	7070	1.67	60 -	6225	- 29	B-106	B-122	B-141

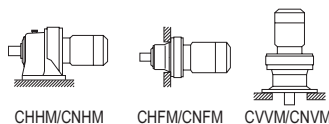
1. Combinations in **bold** are the recommended models for operations for 10 hours/day with uniform load (service factor is about 1.0 for motor rating at 50Hz).
2. Motor slippage may affect n₁ and n₂. Refer to technical data for details.
3. CNHM, CHHM, CNFM, CHFM, CNVM, and CVVM indicate types. Refer to page B-10 for details.
4. Lubrication method is different for each model. Refer to "Lubrication" section in page F-4~F-5 for details.
5. "6" at the end of "input capacity symbol" indicates models with 6P motor. Other models come with 4P motor.

Selection Tables Gearmotors #CNHM60, #CHHM60, #CNVM60, #CVVM60



45 kW		Hz		50Hz		60Hz	
		P		4	6	4	6
		n ₁	r/min	1450	980	1750	1165

50Hz					60Hz					Nomenclature			Page of Dimension Sheet				
Output Speed n ₂ r/min	Output Torque Tout N-m	Allowable Radial Load Pro kgf-m		SF	Output Speed n ₂ r/min	Output Torque Tout N-m	Allowable Radial Load Pro kgf-m		SF	Input Capacity Symbol	Frame Size	Reduction Ratio	CNHM CHHM	CNFM CHF	CNVM CVVM		
46.7	8750	892	69500	7080	1.06	55.5	7360	750	1.22	606-	6205	- 21	B-105	B-121	B-140		
			71000	7240	1.43					606-	6215	- 21	B-105	B-121	B-140		
			75100	7660	1.69					606-	6225	- 21	B-106	B-122	B-141		
			94100	9590	2.16					606-	6235	- 21	B-106	B-122	B-141		
33.8	12100	1230	76800	7830	1.05	40.2	10200	1040	1.24	606-	6215	- 29	B-105	B-121	B-140		
			102000	10400	1.56					606-	6235	- 29	B-106	B-122	B-141		
			114000	11700	2.09					606-	6245	- 29	B-107	B-123	B-142		
33.7	12100	1230	77200	7870	1.00	40.7	10000	1020	1.00	60 -	6215	- 43	B-105	B-121	B-140		
			82000	8360	1.26					60 -	6225	- 43	B-106	B-122	B-141		
			114000	11600	1.06					606-	6235	- 43	B-106	B-122	B-141		
22.8	17900	1830	128000	13100	1.44	27.1	15100	1540	1.21	606-	6245	- 43	B-107	B-123	B-142		
			157000	16000	1.73					606-	6255	- 43	B-107	B-123	B-142		
			193000	19700	2.51					606-	6265	- 43	B-107	B-123	B-142		
			139000	14100	1.05					606-	6245	- 59	B-107	B-123	B-142		
16.6	24600	2510	210000	21400	1.87	19.7	20700	2110	2.09	606-	6265	- 59	B-107	B-123	B-142		
			190000	19400	0.85					60 -	6255DB	- 121	B-115	B-132	B-151		
12.0	32300	3290	234000	23800	0.97	14.5	26700	2730	1.13	60 -	6265DA	- 121	B-115	B-132	B-151		
			190000	19400	0.85					60 -	6265DA	- 165	B-115	B-132	B-151		
11.3	36200	3690	235000	23900	1.19	13.4	30500	3110	223000	22800	1.19	606-	6265	- 87	B-107	B-123	B-142
8.79	44000	4490	250000	25500	0.98	10.6	36500	3720	237000	24200	1.13	60 -	6265DA	- 165	B-115	B-132	B-151
7.44	52000	5300	262000	26700	0.84	8.97	43100	4390	248000	25300	1.01	60 -	6265DA	- 195	B-115	B-132	B-151
6.28	46000	4690	276000	28100	*1	7.58	46000	4690	265000	27000	*1	60 -	6265DA	- 231	B-115	B-132	B-151
4.55	85100	8670	68200	6950	248000	25300	*1	60 -	6275DA	- 319	B-115	-	B-151				
			85100	8670	248000	25300	0.80	5.49	70500	7190	248000	25300	0.97	60 -	6275DA	- 319	B-115



55 kW		Hz		50Hz		60Hz	
		P		4	6	4	6
		n ₁	r/min	1450	980	1750	1165

50Hz					60Hz					Nomenclature			Page of Dimension Sheet		
Output Speed n ₂ r/min	Output Torque Tout N-m	Alloeeable Radial Load Pro kgf-m		SF	Output Speed n ₂ r/min	Output Torque Tout N-m	Alloeeable Radial Load Pro kgf-m		SF	Input Capacity Symbol	Frame Size	Reduction Ratio	CNHM CHHM	CNFM CHF	CNVM CVVM
132	3790	386	51700	5270	1.09	159	3140	320	1.09	75 -	6205	- 11	B-105	B-121	B-140
			52400	5340	1.37					75 -	6215	- 11	B-105	B-121	B-140
			55600	5670	1.81					75 -	6225	- 11	B-106	B-122	B-141
96.7	5160	526	55500	5660	1.09	117	4280	436	1.09	75 -	6205	- 15	B-105	B-121	B-140
			56200	5730	1.37					75 -	6215	- 15	B-105	B-121	B-140
			60000	6120	1.81					75 -	6225	- 15	B-106	B-122	B-141
89.1	5600	571	57800	5900	1.09	106	4710	480	1.09	756-	6205	- 11 *2	-	-	-
			58600	5970	1.37					756-	6215	- 11 *2	-	-	-
			62200	6340	1.81					756-	6225	- 11 *2	-	-	-
69.0	7230	737	61900	6310	1.08	83.3	5990	610	1.08	75 -	6205	- 21	B-105	B-121	B-140
			63300	6450	1.37					75 -	6215	- 21	B-105	B-121	B-140
			66900	6820	1.71					75 -	6225	- 21	B-106	B-122	B-141
65.3	7640	779	62000	6320	1.09	77.7	6420	655	1.09	756-	6205	- 15 *2	-	-	-
			62800	6400	1.37					756-	6215	- 15 *2	-	-	-
			67100	6840	1.81					756-	6225	- 15 *2	-	-	-

- "*2" indicate models manufactured with reducer and motor separately mounted on a common baseplate (horizontal shaft direction) or on an adaptor (vertical shaft direction). Consult us for details, including dimensions.
- Allowable radial load (Pro) is the value at the midpoint of the slow speed shaft.
- "*3" indicate models with reduction ratios equal to nominal ratio. Refer to Table A-3 "6000SK Series (Actual Reduction Ratio)" on page A-4 for actual reduction ratio. Indicated reduction ratio is the same as actual reduction ratio for other models.
- Maintain torque load during operation within "Output torque" in the table for models with "*1" in the SF column. They cannot be operated with 100% motor rating.